



Eastleigh Care Homes

MINEHEAD NURSING HOME



Eastleigh Care Home
Periton Road Minehead Somerset TA24 8DT

T: 01643 702907 F: 01643 707649
email: info@eastleighcarehomes.co.uk website: www.eastleighcarehomes.co.uk

Minehead Nursing Care

Our dedicated nursing wing was built in 2004/05 and offers a modern, comfortable and homely environment. Set in wonderful landscaped gardens with views across North Hill the home occupies an enviable position nestled in the stunning scenery.

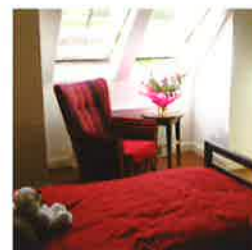
Each spacious room has en-suite facilities and some bedrooms have balconies, which extend the living area providing a lovely place to sit, chat with friends, or just watch the world go by. The rooms are complimented with a flat screen television, optional personal telephone and we encourage residents to personalise their rooms with pictures and small adornments to help create a feeling of home.

Our secure garden offers an enviable sun trap and provides various opportunities for those with green fingers to be involved in the planning and planting of the various beds and tubs. In 2009 we extended our nursing home and have the pleasure of offering 7 luxurious en-suite rooms that would rival most prestigious hotels. The rooms are individually decorated to a high standard and would look well placed in a cosmopolitan magazine however retain that strong feeling associated with home.

Eastleigh is situated just a short ride from the resort town of Minehead which has a wide range of shops, restaurants and cafes, as well as churches of all the main denominations. Frequent excursions are taken to visit the local town and surrounding countryside including Exmoor and the West Somerset coastline. For those that may not be able to partake in excursions we can offer a personalised internet shopping experience through our home laptop which can be taken to wherever you are within the home. There are also regular church services within the home and the visiting denominations are accommodating with visiting residents personally should this be a preference.

Cuisine is a highlight within our home and our resident chefs pride themselves on offering a home-made menu that accommodates everyone's personal choice. Our menus offer home-cooked cuisine from around the world, reflecting the more adventurous tastes of residents who are likely to be more widely travelled than previous generations. We cater for all dietary requirements and needs and strive to provide a balanced nutritious menu that stimulates the mind and palate. Meals are accompanied by a glass of sherry, wine or fresh juice to aid digestion, if this is your preference, and room service is always an option for those seeking a quieter dining experience.

Rooms can be reserved in any of our homes at any time and we can offer continuous residence, respite stay or day care. To arrange a personal tour of our homes please contact our head office.





Eastleigh Care Homes

MINEHEAD RESIDENTIAL HOME



Eastleigh Care Home
Periton Road Minehead Somerset TA24 8DT

T: 01643 702907 F: 01643 707649
email: info@eastleighcarehomes.co.uk website: www.eastleighcarehomes.co.uk

Minehead Residential Care

The original Edwardian building sits in stunning landscaped grounds; which includes a wildflower meadow, with glorious changing views to North Hill and the West Somerset coastline Our home offers individual, comfortable and relaxing accommodation for our residents.

The lounges are designed to encourage socialising in small groups, but also offer privacy and quiet spaces for conversation, or for reading without distraction. Fantastically appointed, they also have probably one of the most beautiful settings in Minehead for you to relax and let the world go by; looking at the spectacular views of North Hill and its ever changing colours, with the added benefit of being able to see the sea. Rooms are complimented with a flat screen television, optional personal telephone and we welcome residents personalising their rooms with pictures and small adornments to help create a feeling of home.

Eastleigh is situated just a short ride from the resort town of Minehead which has a wide range of shops, restaurants and cafes, as well as churches of all the main denominations. Frequent excursions are taken to visit the local town and surrounding countryside including Exmoor and the West Somerset coastline. Our stunning mature gardens allow ample opportunity to sit, relax, socialise and enjoy the sunshine.

Food is undoubtedly one of the highlights of life in our home. Breakfast includes a choice of freshly cooked options for those with an appetite, with most choices throughout the day being home-made; and not forgetting a glass of sherry or wine to aid the digestion. We ensure that all food is prepared professionally by our chefs to the highest standards. Our menus offer home-cooked cuisine from around the world, reflecting the more adventurous tastes of residents who are likely to be more widely travelled than previous generations. We cater for all dietary requirements and needs and strive to provide a balanced nutritious menu that stimulates the mind and palate. There are specialist bathing and shower facilities to create that feeling of spa luxury and to make sure our residents are able to look and feel their best at all times, we have a purpose built hair and beauty salon with a residential hairdresser and a visiting chiropodist. In fact, we can arrange for massage, reflexology or any alternative therapy you desire to complete the personal pampering.

Rooms can be reserved in any of our homes at any time and we can offer continuous residence, respite stay or day care. To arrange a personal tour of our homes please contact our head office.

